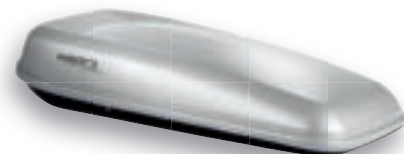




Hapro

**Hapro**  
Roofboxes

*Expanding life.*



*Probox, Room for Fun.*



# NO CONCESSIONS ON COMFORT.

*Carefree and safe travelling with plenty of space.*

The Hapro Probox is your steady and stable partner down the road. Careful attention has been given to its solid appearance, reliability, security and user friendliness. The ample room and up to date materials of the Probox provide for many hours of travelling pleasure. It's a valuable investment in carefree and safe travelling, with plenty of space for all the extra luggage you can think of, year after year, journey after journey. **Are you ready to expand your life?**







# CREATING HAPPY FAMILIES.

*Extra space for a more enjoyable journey.*

The Hapro Probox is the perfect roofbox for every family. It offers a great deal of extra space, allowing everyone to bring along whatever they need. For sports, games, hobbies and more. Preparing for the holidays? You'll suddenly realise that packing is actually fun to do. "Can I take my skates, dad?" "Sure kid, put them next to my fishing rod." With the Hapro Probox there's no need to make further concessions on comfort or your amount of luggage. That means a more enjoyable journey (and stay) for the whole - happy - family!



# LET'S GET CARRIED AWAY.

*A combination that retains its beauty throughout the years.*

The Hapro Probox has a tasteful and timeless design. Its UV-resistant ABS/ASA materials ensure that your roofbox will stay smart and qualitatively superior for many years to come. But above all, the Hapro Probox is solid as a rock. It's rigid and durable thanks to the reinforcement profiles that have been incorporated into the base. This quality factor is just one of the many reasons why the Probox excels.

**ALL TESTS PASSED.** Hapro is risk averse when it comes to safety. The Probox has been subjected to tests under the most severe circumstances, worse than any circumstances you will ever encounter. Hapro guarantees a high safety level, as the Probox has endured TÜV-tests, City Crash Tests, stability tests, and vibration-, water- and wind tunnel tests.



#### Mounting:

The patented Easy-Fit guarantees a quick, secure and easy mounting of the roofbox.

**Material:**

The Hapro Probox is constructed from carefully selected solid and attractive UV- and impact-resistant ABS/ASA recycled plastic materials.

**Opening:**

Loading and unloading the Probox is simple due to the double function of the dynamic spring struts. It opens the lid and keeps it in its optimum position while loading. When closed they pull the lid to the base of the roofbox for a perfect seal.

**Locking:**

The Probox 430 features a single-point locking system at the rear. The central locking system of the Probox 460 and 560 (2- or 3-point, depending on the length of the model) secures the box into place at more than one point. You can close the box with a single turning motion. The lock is sturdy, allowing for years and years of safety.

**Reinforced bottom:**

The metal reinforcement rails over the entire length of the bottom provide strength and stability.

A photograph of two young children, a boy and a girl, sitting in the back of a car. They are both laughing heartily. The boy is on the left, wearing a green tank top, and the girl is on the right, wearing a white tank top. A large, fluffy golden retriever is in the car with them, its head and front paws visible in the foreground. The car's interior, including the seats and windows, is visible in the background.

# START PACKING.

*As if you have an extra car...*



## HAPRO PROBOX, OPTIMAL LOADING.

Forget trailers or cramming your car like a pack donkey. The Probox's practical design allows for optimal loading up to 50 kg. You'll be amazed how much extra luggage you can take, without transporting your kids packed like sardines in a can. Grant you and your family the comfort of cheerful travelling!

**BIG, BIGGER, BIGGEST.** The Hapro Probox is available in three sizes and designs, depending upon your needs. You can choose between The Hapro Probox 430 (150 cm in length, opening at the rear), the Hapro Probox 460 (185 cm in length, opening on right) and the Hapro Probox 560 (208 cm in length, opening on right). All Probox models are available in Matt Silver Grey.



Hapro Probox 430

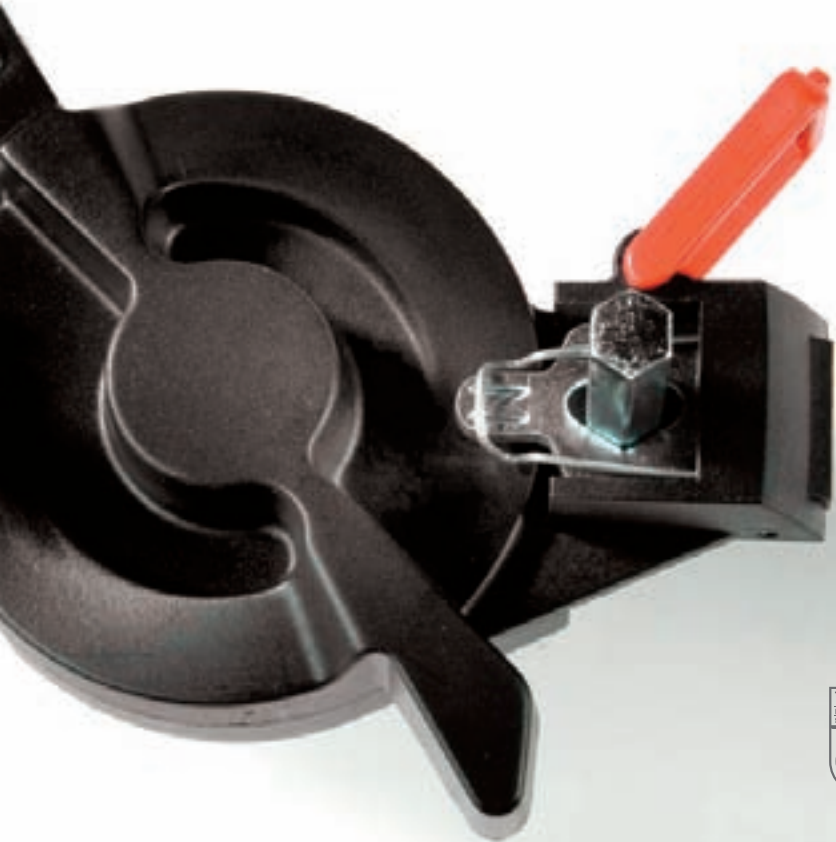


Hapro Probox 460



Hapro Probox 560





# MOUNTING IS CHILD'S PLAY.

*Only a few steps are required.*

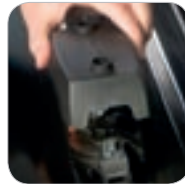
Assembling a roofbox has never been easier. Thanks to the patented Easy-Fit system, only a few steps are required to fasten the Probox rock-solid onto the roof racks. Insert, turn, secure and cover - how trouble-free can it be?



# SAFE AND SOUND.

*Welding would be the lesser option...*

After you have mounted the red safety catch, the roofbox will be securely fixed to the roof bars. Roofbox and car are now a safely secured unit while you drive. Place the protective cover over the Easy-Fit system to ensure that your luggage is optimally protected.



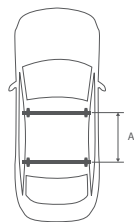


# SPECIFICATIONS.

*All the ins en outs.*

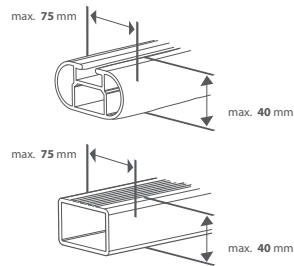


Maximum width roof bars mm:

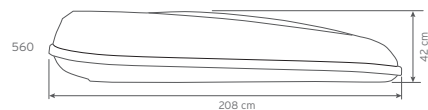
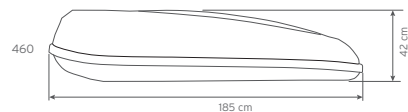
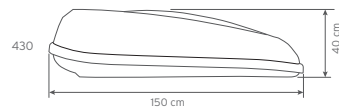


**Hapro Probox  
450,560**  
A = min. 620 mm  
max. 930 mm

**Hapro Probox  
430**  
A = min. 640 mm  
max. 860 mm



Outside dimensions:



Specifications	Probox 430	Probox 460	Probox 560
<b>L x W x H outside</b>	150 x 99 x 40 cm	185 x 80 x 42 cm	208 x 88 x 42 cm
<b>L x W x H inside</b>	144 x 93 x 39 cm	179 x 74 x 41 cm	202 x 82 x 41 cm
<b>Contents</b>	370 L	390 L	490 L
<b>Empty weight</b>	15 Kg	15,5 Kg	20 Kg
<b>Max. allowed load</b>	50 Kg	50 Kg	50 Kg
<b>Opening</b>	rear	right	right
<b>Rear lock</b>	1	-	-
<b>Central locking system</b>	-	●	●
<b>Luggage straps</b>	1	1	2
<b>Mounting system</b>	Easy-Fit	Easy-Fit	Easy-Fit
<b>Suitable for skis and accessories</b>	-	± 6 pair	± 6 -7 pair
<b>Material</b>	ABS/ASA	ABS/ASA	ABS/ASA
<b>Metal reinforcement rail bottom (2)</b>	●	●	●
<b>Warranty</b>	5 years	5 years	5 years



Available Colour 430, 460, 560: Matt Silver Grey

# 5-YEAR WARRANTY.

*A service you probably won't need...*

Hapro demands the absolute best when it comes to materials and production processes. Everything is thoroughly checked to meet the high production standards. Therefore Hapro can guarantee the optimum quality of its products. You can rely on full service, secured within the five-year warranty.





**Hapro**  
*Expanding life.*



[www.hapro.com](http://www.hapro.com)

Hapro International • P.O. Box 73 • 4420 AC Kapelle • The Netherlands